



KNIT HOODED CARDIGAN & PANTS TAILORING

*DESIGNER - DIANA PATSKUN
TRANSLATED BY SVITLANA PUSTOVIT*

KNIT HOODED CARDIGAN

ABBREVIATIONS:

K – knit stitch

YO – yarn over

P – purl stitch

st st – stockinette stitch

We need to calculate required quantity of stitches to be casted on. Knit the sample 10 rows x 10 stitches. Having measured the sample I got 4 cm/1,57 in. That means that there are 10 st in 4 cm/1,57 in. Further measure neck girth (at the place where we'll start to knit raglan) of your crocodile. I've got 15 cm/5,9 in.

In order to find out quantity of stitches in 15 cm/5,9 in: multiply 10 by 15/5,9 and divide by 4/1,57. I've got 37,5 and rounded to 38. If you got odd number, round to even.

Cast on 38 stitches. Now divide them in following way:

- from total quantity subtract 4 raglan stitches ($38-4=34$);
- subtract 3 st for each sleeve ($34-6=28$);
- 28 st distribute for front and back of the cardigan, 14 st for each;
- as our cardigan has open front, divide it into 2 parts: $14/2=7$.

So in the end I get: 7 stitches for first front, raglan stitch, 3 stitches for first sleeve, raglan stitch, 14 stitches for back, raglan stitch, 3 stitches for second sleeve, raglan stitch, 7 stitches for second front. Totally 38 stitches

R1: K7, P1 (raglan st), K3, P1 (raglan st), K14, P1 (raglan st), K3, P1 (raglan st), K7

R2: Purl all knit st of previous row, 4 purl (raglan) st – Knit

R3: K7, yo, P1, yo, K3, yo, P1, yo, K14, yo, P1, yo, K3, yo, P1, yo, K7.

R4: Purl all knit st and yo of previous row, 4 purl (raglan) st – Knit.

R5: K8, yo, P1, yo, K5, yo, P1, yo, K16, yo, P1, yo, K5, yo, P1, yo, K8.

R6: Purl all knit st and yo of previous row, 4 purl (raglan) st – Knit.

R7: K9, yo, P1, yo, K7, yo, P1, yo, K18, yo, P1, yo, K7, yo, P1, yo, K9.

R8: Purl all knit st and yo of previous row, 4 purl (raglan) st – Knit

R9: K10, yo, P1, yo, K9, yo, P1, yo, K20, yo, P1, yo, K9, yo, P1, yo, K10.

R10: Purl all knit st and yo of previous row, 4 purl (raglan) st – Knit

R11: K11, yo, P1, yo, K11, yo, P1, yo, K22, yo, P1, yo, K11, yo, P1, yo, K11.

R12: Purl all knit st and yo of previous row, 4 purl (raglan) st – Knit

R13: K12, yo, P1, yo, K13, yo, P1, yo, K24, yo, P1, yo, K13, yo, P1, yo, K12.

R14: Purl all knit st and yo of previous row, 4 purl (raglan) st – Knit

R15: K13, yo, P1, yo, K15, yo, P1, yo, K26, yo, P1, yo, K15, yo, P1, yo, K13.

R16: Purl all knit st and yo of previous row, 4 purl (raglan) st – Knit

R17: K14, yo, P1, yo, K17, yo, P1, yo, K28, yo, P1, yo, K17, yo, P1, yo, K14.

R18: Purl all knit st and yo of previous row, 4 purl (raglan) st – Knit

R19: K15, yo, P1, yo, K19, yo, P1, yo, K30, yo, P1, yo, K19, yo, P1, yo, K15.

R20: Purl all knit st and yo of previous row, 4 purl (raglan) st – Knit

Slide the stitches off the needle and place them on the thread with the help of sewing needle. Front and back of dress slide off on one thread, sleeves – on two separate threads. Raglan stitches I referred to the front. In the end I got 70 stitches.

Front and back of the dress knit 12 rows St st, and 5 rows ribbing (K1xP1). Then bind off stitches.

Continue to knit sleeves to desired length. I knitted them on 5 needles in order not to sew the sides then. Finish knitting sleeves 5 rows ribbing.

I crocheted around edges of the front of the cardigan. Then I transferred stitches on the needles and knitted 5 rows ribbing (K1xP1). Don't forget to make holes for buttons on one of the front sides.

HOOD

Cast on 80 stitches for the hood. Knit first 5 rows ribbing (K1xP1), stockinette stitch rest 30 rows.

Then sew hood as shown on the picture and sew it to the cardigan.









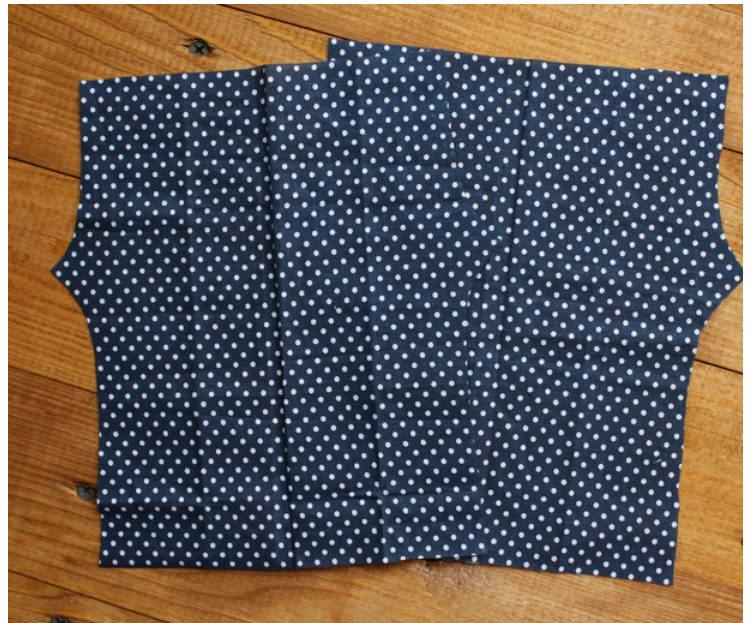
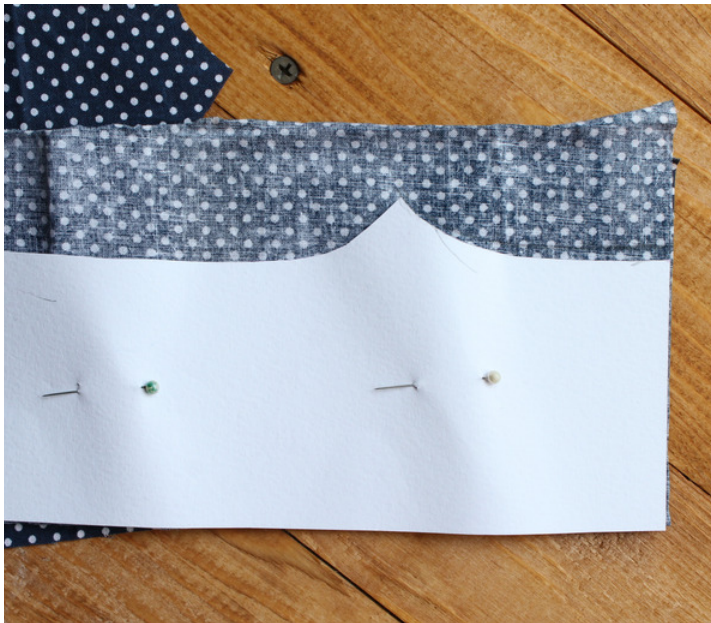
PANTS

First make pants pattern. You can print it from the page below and cut it out.

Fold fabric in half, so the bend line on the paper pattern matches bend line of fabric. Pin the pattern to fabric and mark it with pencil around. Draw allowance line beside in the distance 0,5 cm/ 0,2 in from the pattern line. Cut out 2 details. Iron well.

Bend & stitch top of the pants about 1-1,5 cm/0,4-0,6 in from the edge, so you can insert elastic inside. Measure and cut the length of elastic according to the body circumference. With the help of safety pin pull elastic through both details of the panties. Fix the edges of the elastic together. Sew the side parts of the top as shown on the pictures below.

Straighten. Bend and stitch bottom of the pants. Then cut a little to narrow bottom of the panties, as shown on the picture. Now sew the center and pants are ready. Iron them well.







FABRIC BEND LINE

